



SHOULD BE KEPT IN EVERY SICK ROOM

Sanitas Fluid should be sprayed about sick rooms to prevent the spread of infection and to re-vitalise the atmosphere through the oxygen which is liberated when Sanitas Fluid comes into contact with the air. (Sprays are supplied to fit the large bottles.)

When sponging a patient, a little Sanitas Fluid should be added to the water. It is very refreshing and greatly adds to the comfort of the patient.

As a Vaginal Douche, use one part Sanitas Fluid to nine parts of warm water.

Samples on request to Nurses enclosing their professional card to

THE SANITAS CO. LTD. (Dept. B.J.N.), Limehouse, LONDON, E.14

BATTERSEA POLYTECHNIC

LONDON, S.W.11.

Principal: G. F. O'RIORDAN, B.Sc. (Eng.),
F.R.S.E., M.I.Mech.E., M.I.A.E.

DOMESTIC SCIENCE DEPARTMENT.

HOUSEKEEPER'S CERTIFICATE

This course requires attendance on three evenings a week for two years and includes instruction in Cookery, Housewifery, Laundrywork, Household Needlework and simple Upholstery, Hygiene and Dietetics.

Other courses, full-time and evening, in all domestic science subjects.

FULL PARTICULARS ON APPLICATION TO THE PRINCIPAL

GAYLER & POPE LTD.

112-117 High St. Marylebone London W.1

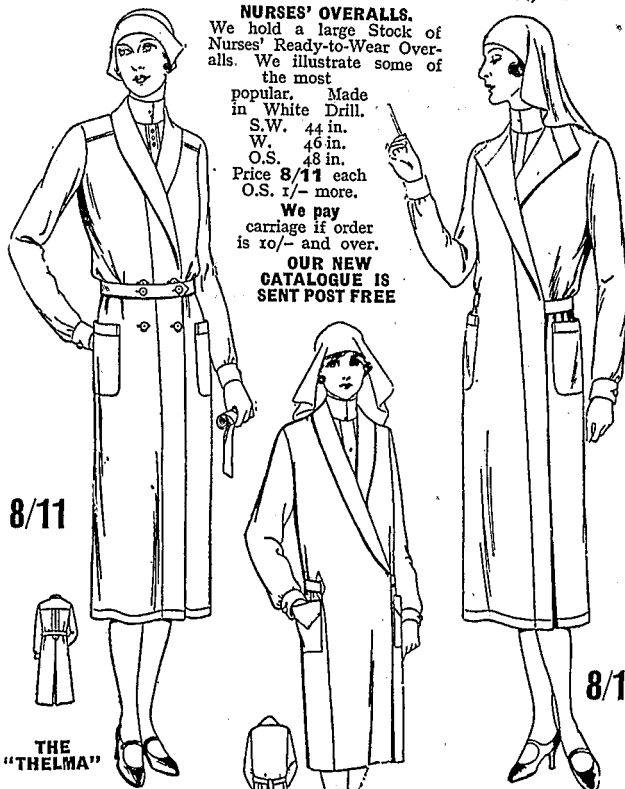
(3 minutes from Harley Street or Bond Street Tube Station.)

NURSES' OVERALLS.
We hold a large Stock of Nurses' Ready-to-Wear Overalls. We illustrate some of the most

popular. Made in White Drill.
S.W. 44 in.
W. 46 in.
O.S. 48 in.
Price 8/11 each
O.S. 1/- more.

We pay carriage if order is 10/- and over.

OUR NEW CATALOGUE IS SENT POST FREE



8/11

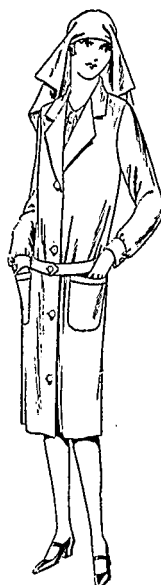
8/11

THE "THELMA"

THE "WIMPOLE."

Close at One on Thursdays.
Open till Seven Saturdays.

THE "PORTLAND."
New Cross-over Overall, long troll collar, made in White Drill.
S.W., 42 in., 44 in. ... 7/11
W. 46 in., 48 in. ... 8/11
O.S., 48 in., 50 in. ... 9/11
As sketch or with long sleeves.



THE "WELBECK"
White Drill Overall, or with Half Sleeves. With Coat Collar and Revers—

S.W. ... 7/11
W. ... 8/11
O.S. ... 9/6
Linen finish Cloth 6/11



THE "ARMY" CAP.
Fine Lawn Hemstitched.
27 in. square ... 1/9
31 in. square ... 2/3
36 in. square ... 2/6
Also in ORGANDI, 6d. extra each size.
V.A.D. Lawn, 27 x 19 in. 1/4½

APRON CLOTH.
G.P., linen-finished. Highly recommended. 52 in., yard, 1/6½

The "DORIS" ditto. 54 in., yard, 1/11½
The "PORTLAND." 54 in. yard, 2/3½

THE "AVIS."
Nurses' Overall Dress with detachable buttons, inverted pleats at sides. The new inset pockets. Pique and Drill, 12/11; Poplin, 15/11 and 18/11; Tricoline, 21/9
Nurse Cloth 12/11, 14/11.

GAYLER & POPE, Ltd., High St., Marylebone, London, W.1.

[previous page](#)

[next page](#)